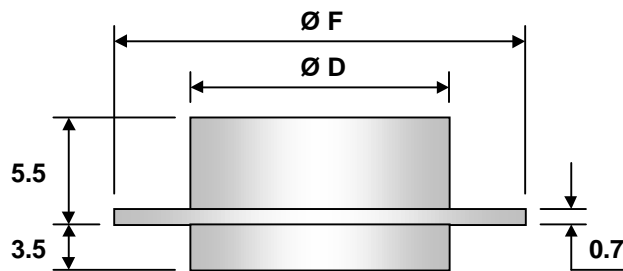
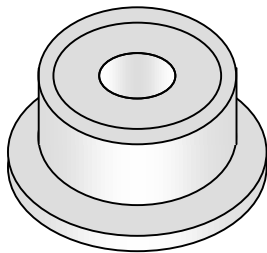


Pressure Sensors

Serie 017 and 023



Miniature Absolute / Reference or Differential Pressure Sensors constructed from stainless steel highly resistant to corrosion. Electrical connections made via 3 flat cables (Supply, GND and Output Signal). Internal electronics provide a ready-to-use stable output signal. No additional compensation print or electronics is required.

Serie 017

Characteristics	Type 017A	Type 017B	Type 017C	
Pressure Ranges	0-10 / 0-20 / 0-50 / 0-100			Bar
Output Signal	0.5...4.5 V / 0...100 mV / 4...20 mA			
Supply Voltage	6...16			VDC
Accuracy (incl. Linearity, Hysteresis, ...)	< 0.25	< 0.5	< 1	% FS
Temperature Error Zero	< 0.005	< 0.01	< 0.02	% FS / ° C (0...50° C)
Temperature Error Sensitivity	< 0.005	< 0.01	< 0.02	% FS / ° C (0...50° C)
Time Constant	< 1			ms
Material	Stainless Steel (available with or without flange)			
Unit Price (1...4 pcs)	189.00	159.00	129.00	US\$

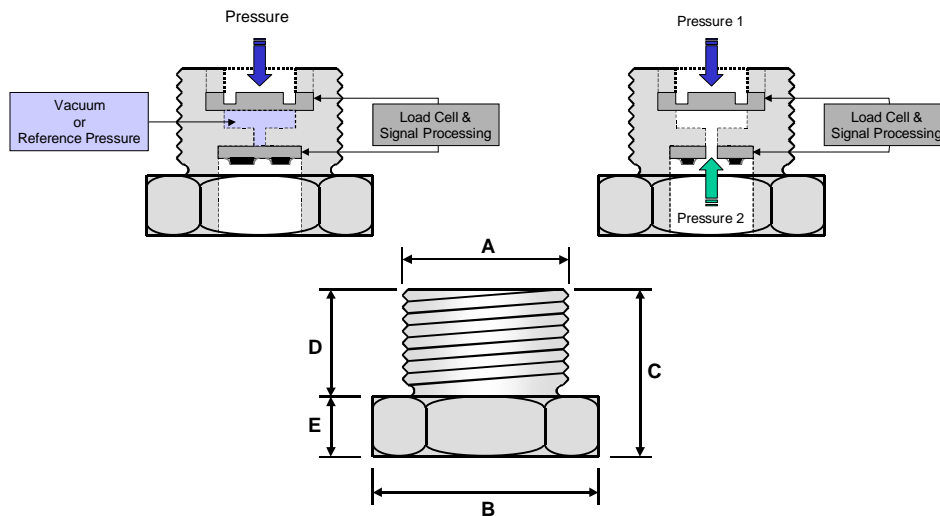
Serie 023

Characteristics	Type 023A	Type 023B	Type 023C	
Pressure Ranges	0-0.05 / 0-0.1 / 0-0.2 / 0-0.5 / 0-1 / 0-2 / 0-10			Bar
Output Signal	0.5...4.5 V / 0...100 mV / 4...20 mA			
Supply Voltage	6...16			VDC
Accuracy (incl. Linearity, Hysteresis, ...)	< 0.25	< 0.5	< 1	% FS
Temperature Error Zero	< 0.005	< 0.01	< 0.02	% FS / ° C (0...50° C)
Temperature Error Sensitivity	< 0.005	< 0.01	< 0.02	% FS / ° C (0...50° C)
Time Constant	< 1			ms
Material	Stainless Steel (available with or without flange)			
Unit Price (1...4 pcs)	199.00	169.00	139.00	US\$

Dimensions (mm)	D	F	Quantity	Discount *
Serie 017	17	21	5...9 pcs	15 %
Serie 023	23	27	10...25 pcs	25 %

* All Models and Series

Serie G1/2 and G3/4



Serie G1/2 and G3/4 have the same characteristics as Serie 017 and 023. The package is a robust stainless steel Gas Thread Mount. Electrical connections made via 3 PVC cables (Supply, GND and Output Signal). All models provide an internal signal conditioning.

Serie G1/2

Characteristics	Type G1/2A	Type G1/2B	Type G1/2C	
Pressure Ranges	0-10 / 0-20 / 0-50 / 0-100			Bar
Output Signal	0.5...4.5 V / 0...100 mV / 4...20 mA			
Supply Voltage	6...16			VDC
Accuracy (incl. Linearity, Hysteresis, ...)	< 0.25	< 0.5	< 1	% FS
Temperature Error Zero	< 0.005	< 0.01	< 0.02	% FS / ° C (0...50° C)
Temperature Error Sensitivity	< 0.005	< 0.01	< 0.02	% FS / ° C (0...50° C)
Time Constant	< 1			ms
Material	Stainless Steel			
Unit Price (1...4 pcs)	229.00	199.00	169.00	US\$

Serie G3/4

Characteristics	Type G3/4A	Type G3/4B	Type G3/4C	
Pressure Ranges	0-0.05 / 0-0.1 / 0-0.2 / 0-0.5 / 0-1 / 0-2 / 0-10			Bar
Output Signal	0.5...4.5 V / 0...100 mV / 4...20 mA			
Supply Voltage	6...16			VDC
Accuracy (incl. Linearity, Hysteresis, ...)	< 0.25	< 0.5	< 1	% FS
Temperature Error Zero	< 0.005	< 0.01	< 0.02	% FS / ° C (0...50° C)
Temperature Error Sensitivity	< 0.005	< 0.01	< 0.02	% FS / ° C (0...50° C)
Time Constant	< 1			ms
Material	Stainless Steel			
Unit Price (1...4 pcs)	239.00	209.00	179.00	US\$

Dimensions (mm)	A	B	C	D	E
Serie G1/2	G 1/2" (20.96 mm)	SW 24	24	16	8
Serie G3/4	G 3/4" (26.44 mm)	SW 30	24	16	8